



Bervic Engineering Company Pty Ltd

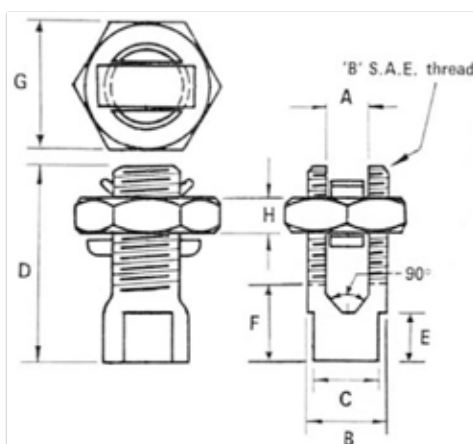
258 Boundary Road, Braeside, Victoria 3195 Australia
 Tel: +61 3 9587 2766 Fax: +61 3 9587 3485
 E-mail: bervic@bervic.com.au www.bervic.com.au

For fast fixing of parallel conductors use
BERVIC Split Bolt Clamps



Proudly **Made In Australia** from Australian Brass

| Clamp No. | | | Maximum Conductor Size | | Dimensions in mm (except B which is in Inches) | | | | | | | |
|-----------|-------|----------------|------------------------|---------|--|-----|------|------|-----|------|------|-----|
| Type | Plain | Electro Tinned | mm ² | Wires | A | B | C | D | E | F | G | H |
| A | B22 | B22 T | 16 | 7/.064 | 5.3 | ½" | 10.4 | 30.2 | 7.9 | 11.1 | 17.9 | 6.3 |
| B | B24 | B24 T | 35 | 7/.104 | 8.3 | ⅝" | 13.2 | 36.5 | 9.5 | 14.3 | 23.2 | 6.3 |
| C | B25 | B25 T | 70 | 19/.083 | 10.9 | ⅞" | 17.9 | 44.5 | 9.5 | 22.2 | 27.7 | 7.1 |
| D | B26 | B26 T | 95 | 19/.101 | 12.9 | ⅞" | 17.9 | 50.8 | 9.5 | 22.2 | 27.7 | 7.1 |
| E | B28 | B28 T | 185 | 37/.103 | 18.5 | 1¼" | 23.2 | 66.7 | 9.5 | 25.4 | 42.1 | 7.9 |



Bervic Split Bolt Clamps are made of 100% Australian Brass and comes in a plain or electro-tinned finish.

All dimensions are to Electrical Supply Association of Australia Standards (ESAAS). The **Type** number is the ESAAS reference number.

Bervic Split Bolt Clamps are supplied in sturdy cardboard cartons.

Pack size: **B22**-Qty 500, **B24**-Qty 250, **B25**-Qty 125, **B26**-Qty 100, **B28**-Qty 25